

# FRANKLIN

FRANKLIN  
FRANKLIN  
FRANKLIN  
FRANKLIN

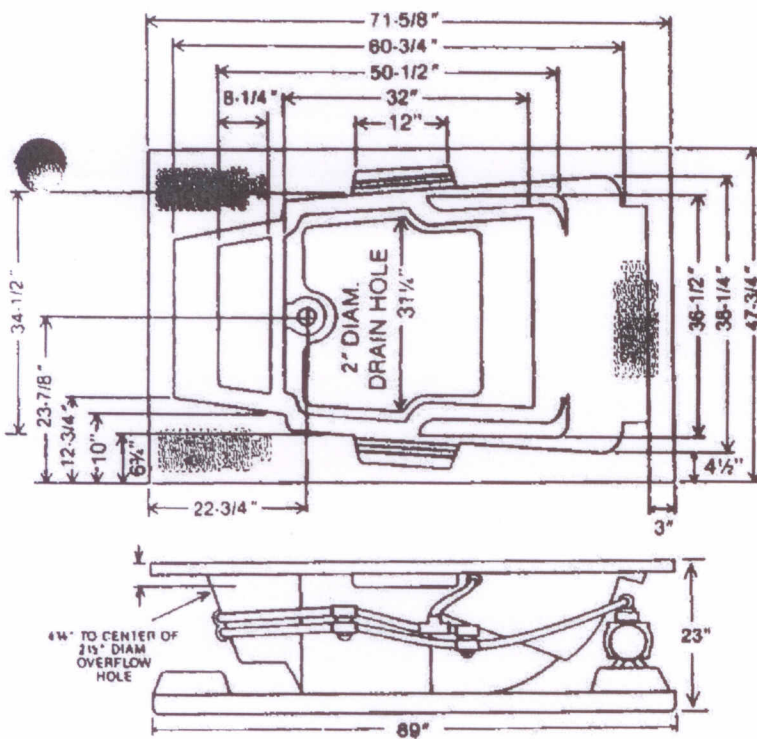
WHIRLPOOL  
AIR BATH  
COMBO BATH  
TUB ONLY

7248FW  
7248FA  
7248FWA  
7248FT

INSTALLATION NOTES: Install this acrylic fixture according to the installation manual. Confirm specifications before starting installation.

ELECTRICAL REQUIREMENTS: Whirlpool pump/motor 120V, 20A, 60HZ, Air Blower/Heater 120V, 20A, 60HZ. Dedicated GFCI required.

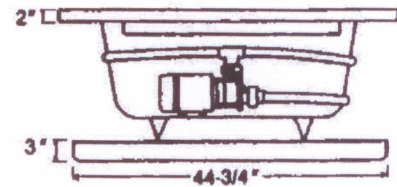
All dimensions are  $\pm 1/4$ " and subject to change without notice.



ELECTRICAL SPECIFICATIONS - 115V, 20 AMP, GFCI Protected Circuit. Additional identical circuit required with installed heater. If optional Solo Touch electronic on/off is installed, a 120 VAC, 20 AMP, GFCI dedicated circuit is required.

| SPECIFICATIONS                                       | WHIRLPOOL  | TUB        |
|--|------------|------------|
| 71 $\frac{1}{8}$ " x 47 $\frac{1}{4}$ " x 23" Lip 2" |            |            |
| Water Capacity - Operating Level                     | 75.0 gal.  |            |
| - To Overflow  | 98.0 gal.  | 98.0 gal.  |
| Approx. Unit Weight                                  | 230.0 lbs. | 195.0 lbs. |
| Approx. Shipping Weight                              | 300.0 lbs. | 265.0 lbs. |

\*All dimensions are  $\pm 1/8$ " and subject to change without notice. Always pre-measure tub/whirlpool prior to framing alcove or creating deck installation cut out.



ELECTRICAL REQUIREMENTS: 115V, 20 AMP, GFCI Protected Circuit. Additional source circuit required for optional In-Line 'T' Heater. 120 VAC, 20 Amp, GFCI dedicated circuit required with option 'Solo Touch' On/off control



Sales & Customer Service

phone: 800.930.0050  
fax: 800.930.0051  
email: sales@luxurylinetubs.com  
web: www.luxurylinetubs.com

Facilities

1610 James Rodgers Drive  
Valdosta, GA 31601  
510 E Jones St  
Wilson, NC 27893